



RED LED MASK

illumination LED mask sheet

1. Product Principle

2. Product Overview

3. Product Proposal

– Concept

– Design

※ Market Trend

※ Wavelength Technology

※ LED Device vs Mask Pack Comparison

※ Product Efficacy

※ Clinical Trial

※ Test Report




Principle

- We release Light Mask Pack based on the luminous principle after absorbing natural light energy
 - Luminous Area – Blue, Green, Red, NIR
 - Light therapy materialization due to delayed luminous
 - Color can be selected according to customer needs



World first Luminous Technology

- Luminous design technology for each color for light therapy
 - Inorganic & ceramic synthesis process grafting to develop harmless luminous body
 - World's first low power light therapy mask pack technology
 - Development of printing process for each use (specialized printing technology by the each products)
 - : Mask type, Band type, Silicon type



Low power Light therapy

- Proprietary technology for low power light therapy
 - Convenient light therapy mask
 - Skin penetration depth and reach layer selection according to the luminous wavelength

Overview

Light mask pack is the disposable mask pack for commercialization by showing light therapy function using ambient light (fluorescent lamp, sunlight, etc.) without electric energy.

Features

As the core luminous delay time, the luminous intensity of the existing blue / green luminous phosphor is reduced by more than 60% immediately after luminous but the luminous mask pack is reduced by only 10% to realize luminous time more than 20 minutes

Effect

It is effective in preventing aging and improving skin elasticity by utilizing LED luminous effect on skin aging and disease by exposure to ultraviolet rays and fine dust

Issue

Dry

多

"I think my wrinkles are more noticeable because I have a lot of dry skin.."

Exfoliation skin

"My face exfoliation continuously make unless skin take care of it steadily"

Crease

多

It gets wrinkled more and more. I can't do anything to do. "

Scalp

多

"I has to manage about scalp care is because my face is drooping."

Skin trouble

"I think my skin is getting sensitive because the environment is getting more worse"
"I've got a lot of skin troubles, so I go to the dermatologist and get IPL care on a regular."

Elasticity

多

"My jawline seems to down because my skin is not elastic"



● The dermatologist



"immediate and complete effect"

"medically solves skin problems"

● Skin care shop



"To please the mind rather than the immediate effect"

"The long term project"

● Beauty device



LED Mask device



Galvanic



High-frequency device

High cost
Long term
Complexity

REJU21 MASK PACK

Just one

Easy to use



Don't need dermatologist

Saving time

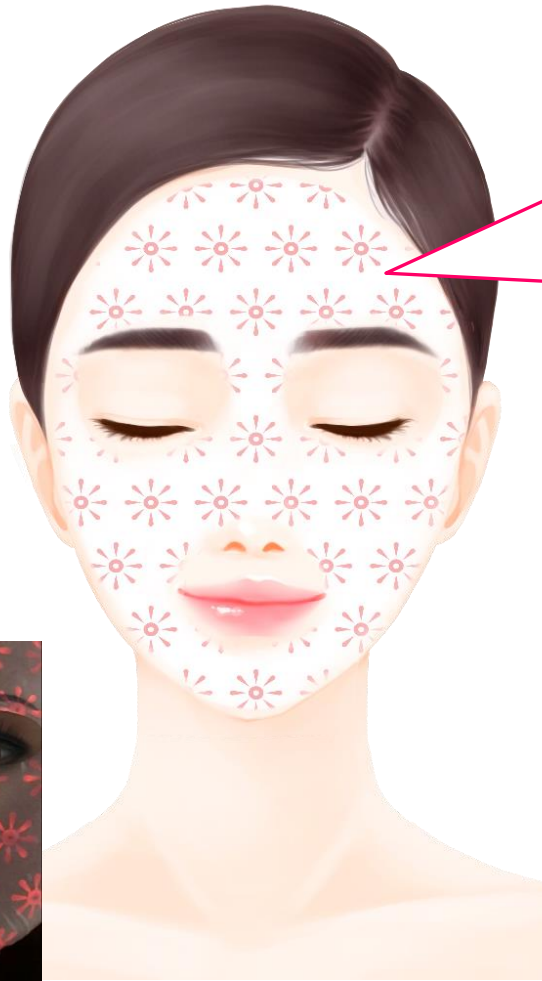
Self-luminated light

RED LED MASK

Wrinkle improvement & Extreme whitening



※ The mask sheet is made of bamboo cellulose material and certified for
Vegan and Biodegradation. It's an eco-friendly mask sheet



Print nanoparticle illuminator on
mask sheet

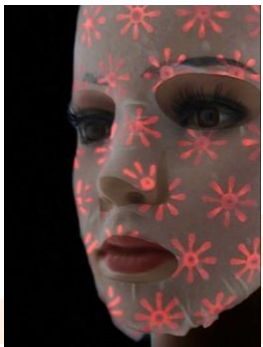
→ LED light emits the whole sheet

Effect

- 380-780 μm spectral emission in the wavelength range


※ Effect :

Whitening → Skin regeneration
→ Skin tone improvement





스스로 빛을 내는 신개념 RED LED 마스크팩
Self-illuminated RED LED MASK PACK
以在家接受护理的心情 自我发光的新概念RED LED面膜



집에서도 전문 피부샵에서 관리받는 효과
The effect of getting care from professional skin shops
在家也能享受到如同在专业皮肤门店一般的养护效果

Product application cases

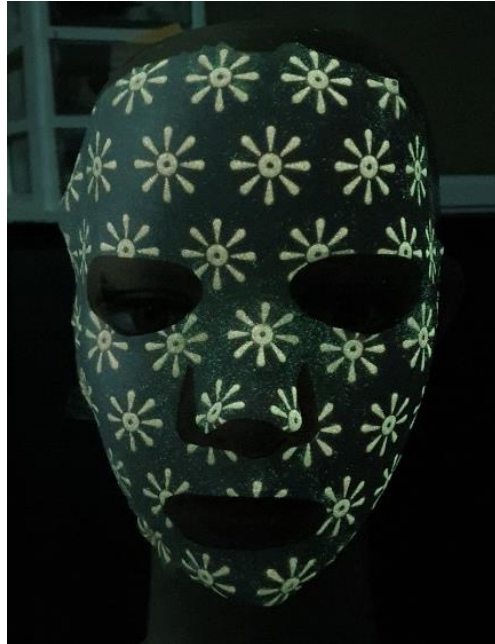
MICHELLE'S PICK
REJU21



Light on



Light off



The effect contained in the RED LED MASK absorb the surrounding light and emission.
It have the same effect as investigating the LED directly on the skin.



자연광



LED



형광등





RED LED MASK is a self-illuminated mask pack that combines the benefits of an LED Mask device with an ordinary pack.



*The effect contained in the mimiclub absorb the surrounding light and emission.
It have the same effect as investigating the LED directly on the skin.*



Product application cases

MICHELLE'S PICK
REJU21



BONHENNA x Grip
라이브 쇼핑 생방송 **Live**
10월 05일(월) 밤10시

빛을 내는 마스크팩
RED LED MASK

그리퍼 배우 이화선님 #GRIP #이화선 #LED마스크팩

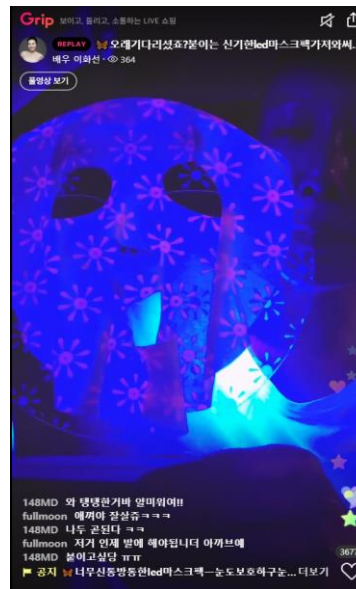
Download on the App Store
GET IT ON Google Play



RED LED MASK PACK (Lifting & Brightening)

Lee, Hwa Sun / Actress

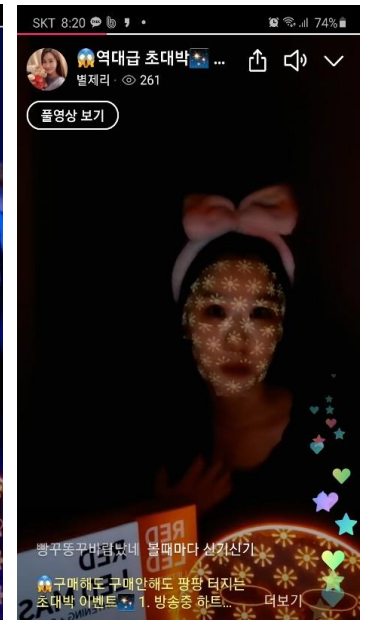
GRIP Live



BONHENNA x Grip
라이브 쇼핑 생방송 **Live**
9월 9일(수) 밤10시

빛을 내는 마스크팩
RED LED MASK

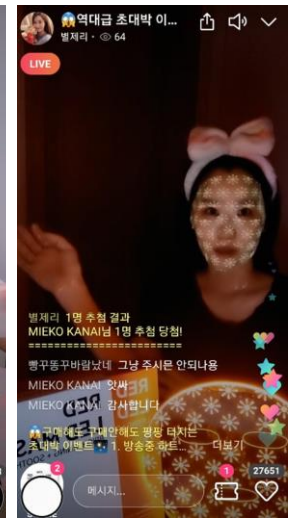
**GRIP 생방송중에만
파격할인!!**

RED LED MASK PACK
(Lifting & Brightening)

STARJERRY /YouTuber

GRIP Live

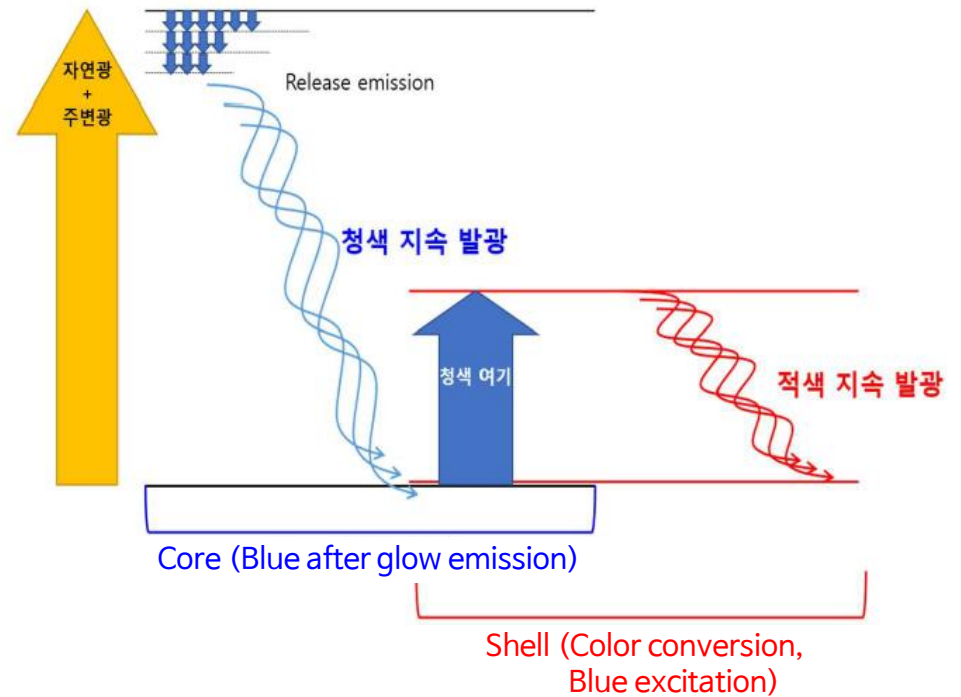


<https://youtu.be/bs1pl6lfxal>

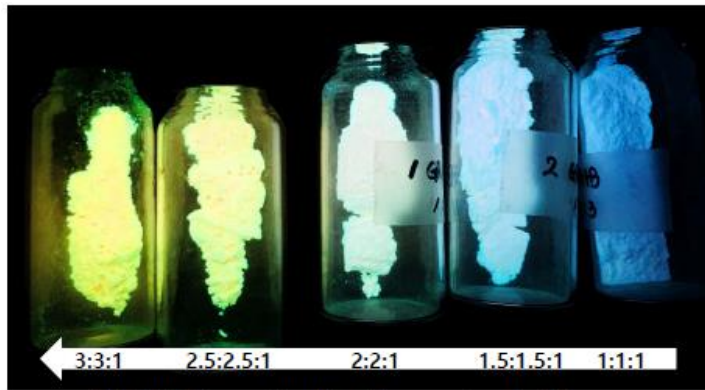


CORE SHELL COMPLEX

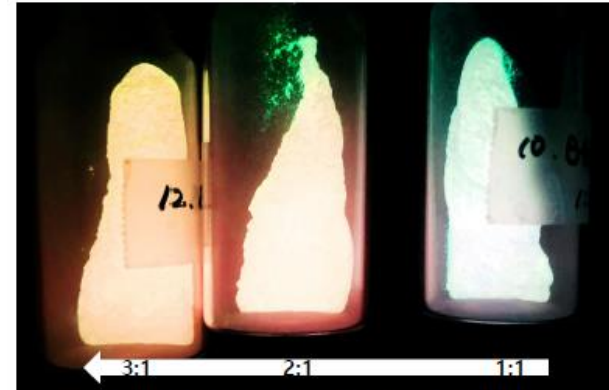
- 대표 FORMULA : $M \cdot Al_2O_3$
- Co-doped sapphire



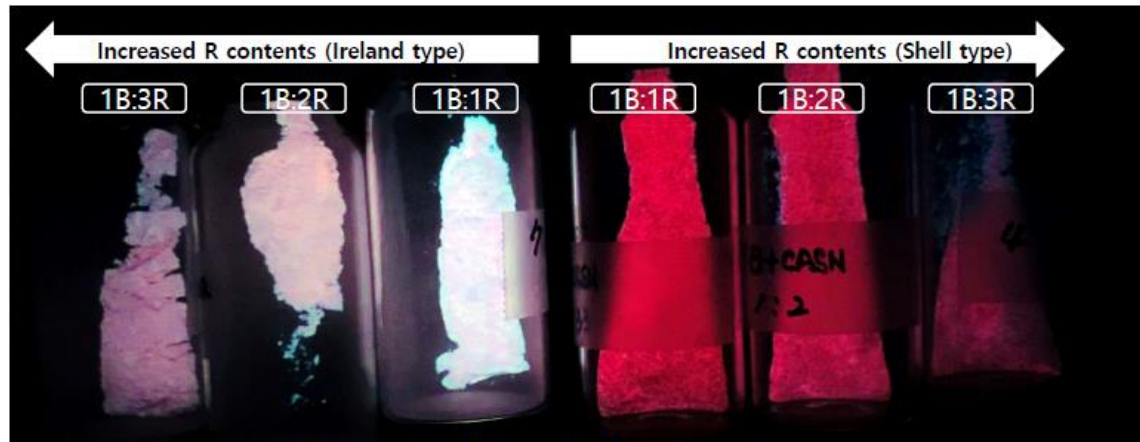
CORE SHELL COMPLEX IMAGE



R/G/B Core-Shell ratio control picture



R/B Core-Shell Ratio control picture



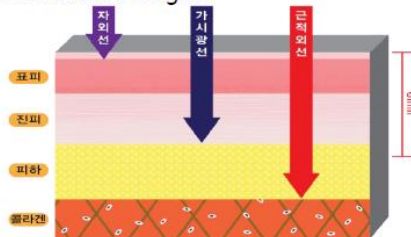
R/B Core-Shell morphology control picture

※ Shell이 축적될수록 RED광 파장 세기가 커짐

"Only one therapy with no side effects!" The press & paper about skin-effects using Light by NASA and Research Institutions and Media

- the principle that light energy is converted into chemical, kinetic, or thermal energy for the target of physiochemical treatment in cells.
- It is important that special light is effective into a special chromatophore in the cell.

→ Light energy penetrates the subcutaneous layer of the skin to help circulate the blood. Therefore, by increasing the temperature of the skin, it expands the blood vessels and facilitates metabolism. As a result, it regenerates skin cells and enhances skin's immunity, relieving pain, inflammation, and muscle fatigue.



Effect of red and near-infrared wavelengths on low-level laser (light) therapy-induced healing of partial-thickness dermal abrasion in mice

enhanced collagen accumulation, and complete re-epithelialization

Achresh Gupta • Tianhong Dai • Michael R. Hamblin

Received: 19 June 2012 / Accepted: 18 April 2013 / Published online: 26 April 2013
© Springer-Verlag London 2013

Abstract Low-level laser (light) therapy (LLLT) promotes wound healing, reduces pain and inflammation, and pro-

liferating cell nuclear antigen (p<0.05) was evident in the 810-nm wavelength compared with other groups.

modulated by different wavelengths of light in the rat and

publications and, together with the partial effectiveness of

enhanced collagen accumulation, and complete re-epithelialization

phore in LLLT.

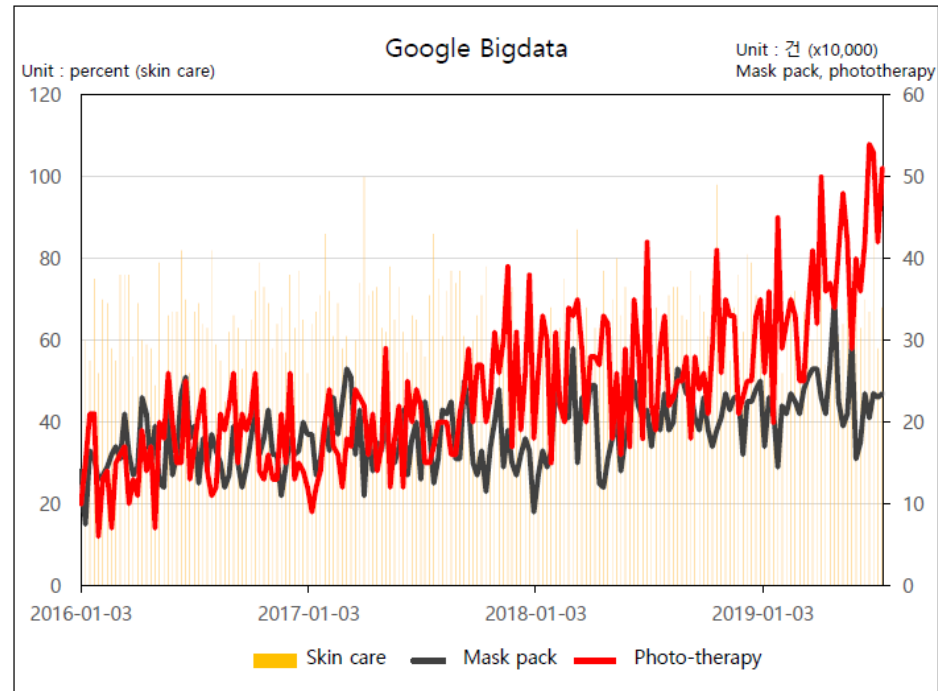
Keywords Cytokeratin-14 • Low-level laser (light) therapy • Near-infrared • Partial-thickness abrasion • Photomodulation • Proliferating cell nuclear antigen (PCNA)

Introduction

The use of laser or other light sources at non-thermal irradiances for healing and relief of pain and inflammation (among other medical applications) is known as low-level laser (or light) therapy (LLLT), phototherapy, or photomodulation. In the past few decades, a large number of reports demonstrating the positive effects of LLLT in various in vitro [1–7], in vivo [5, 8–12], and clinical studies [13–15] have been published. LLLT has emerged in recent years as a non-invasive physical modality for various musculoskeletal, neurological, and cutaneous disorders [17]. LLLT involves exposing cells or tissues to low-levels of red and near-infrared (NIR) light and is referred to as “low-level” because of the use of light at energy or power densities that are low compared to other forms of laser therapy that are used for ablation, cutting, and thermally coagulating tissue.

Springer

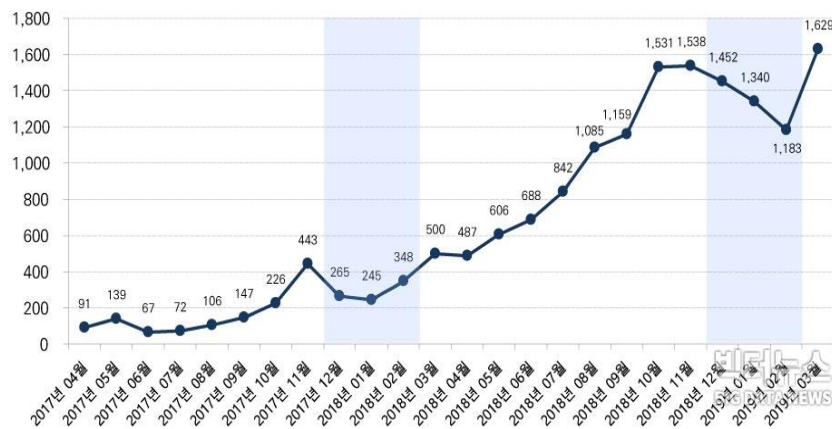
출처: Lasers Med Sci



- According to Google's big data analysis, it is confirmed that interest in photo therapy is growing as of January 2018.
- From January 2019, search volumes have increased dramatically increased.
- Due to the curiosity of LED masks, it is confirmed that interest in photo therapy has increased and number of searches have increased.

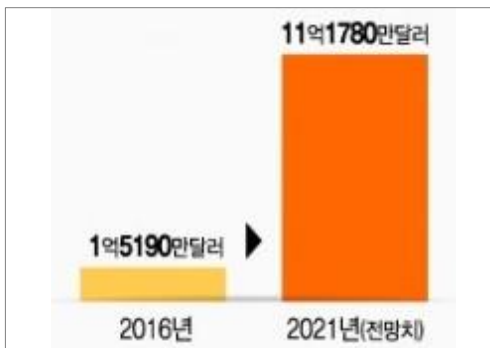
Various LED mask type products are being released as phototherapy becomes popular.

Search Trend for “LED Mask” (‘18. 4~’19.3)



- Increases in phototherapy products that uses LED
- Home care products using LED become popular Among customers
- 60% of the beauty devices are LED types. (LG Pra L, L.linic)
- High product prices limit market growth.

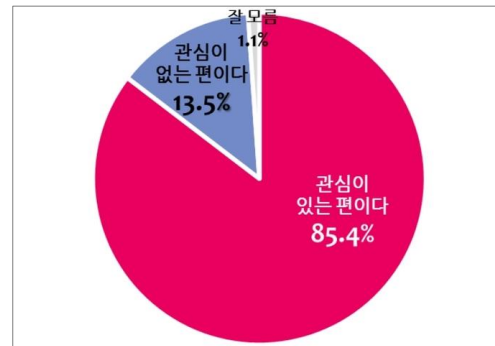
Market size



The global UV LED market is expected to reach \$ 11.178 million in 2021 from \$ 151.1 million in 2016

[Source] Money Today May 2018

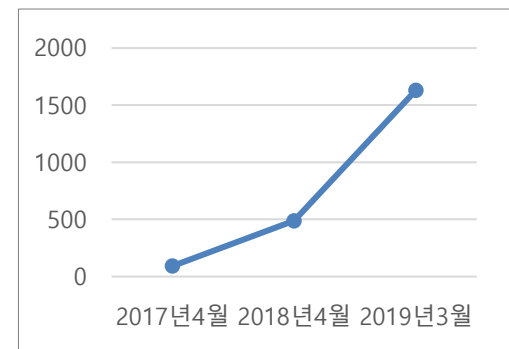
Consumer's behavior



If you are a woman, you can see how you care about your skin care needs. 96.4% of women feel the need for skin care

[Source] Newsis April 2019

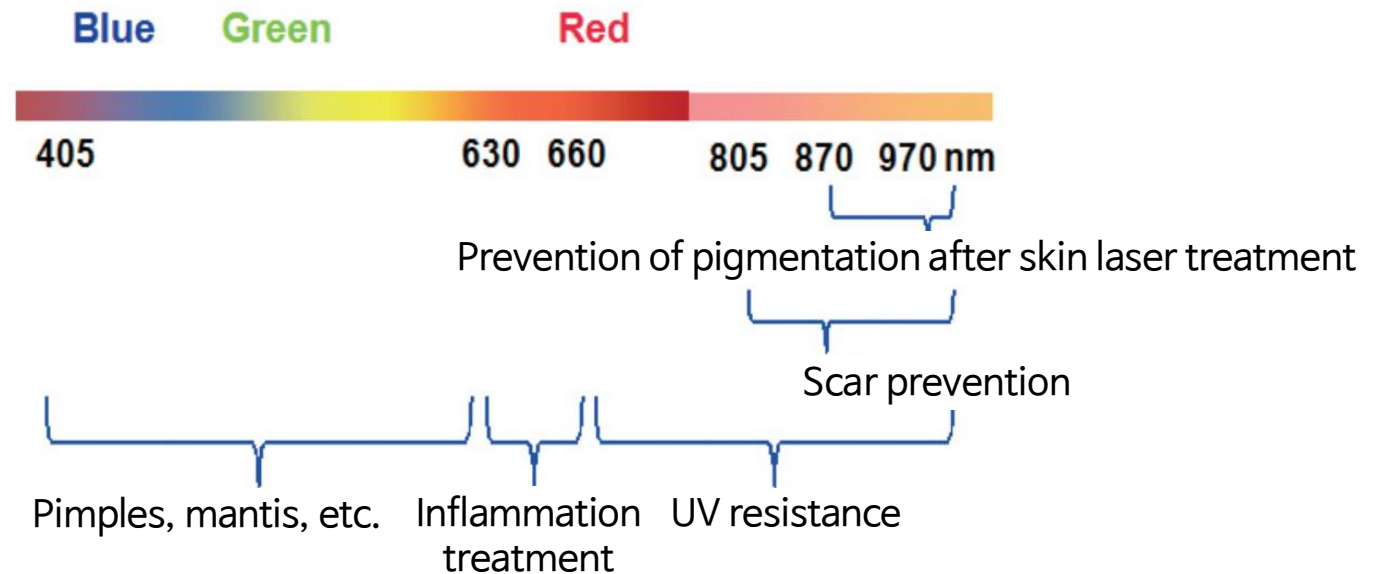
Search engine - LED MASK



Consumers' perceptions and trends about skin care have been changed. In fact, search volume survey results show 18 times higher than April 2017

[Source] Market Economy April 2019

Wavelength band and its effects



- Phototherapy is a type of therapy that whitens / regenerates / treats skin, reduces hair loss, relieves pain with specific wavelengths of light.
- As the US Food and Drug Administration (FDA) formally approves LED phototherapy devices that emit light in the visible or near infrared region, it is becoming popular.
- A low-power phototherapy called LLLT(Low Level Laster Therapy) is used to smooth the skin by activating the keratin in the outer layer of the skin.

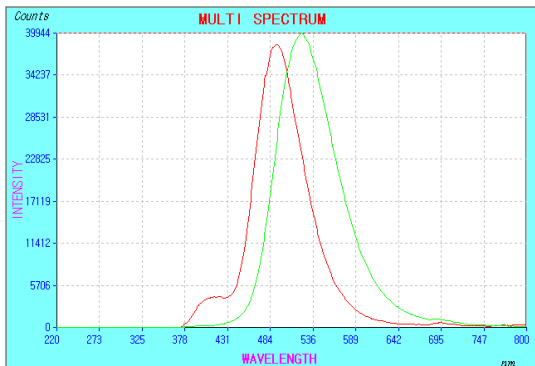
LED function comparison (Mask device **VS** Mask pack)

- Existing LED mask devices are very inconvenient to charge and use and also expensive but available to use semi-permanently.
- LED mask pack can be selected from the light emission area up to UV-NIR in the form of inorganic phosphor, disposable use

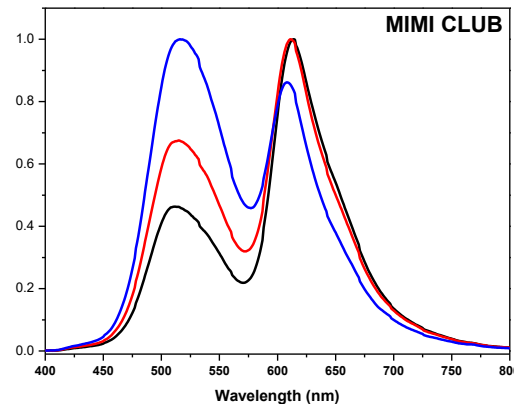
→ **Convenient and easy to use**

| Wavelength range | | Effect | LED Mask Pack | LED Device |
|---------------------------------|--------------------------------------|--|--|----------------|
| UV-A (Near Ultraviolet Rays) | 320~400 μm | <ul style="list-style-type: none">▪ Vitamin D formation▪ Vitiligo and dry skin treatment▪ Atopic dermatitis treatment▪ Scleroderma and fungal treatment | Full range adjustable | Not adjustable |
| Visible light | 400~780 μm | <ul style="list-style-type: none">▪ Neonatal Jaundice Treatment▪ Acne and blemish treatment▪ Skin improvement and optic nerve treatment▪ Depression and Aesthetic treatment | Full range adjustable | Not adjustable |
| IR-A | 780 μm ~2.5 μm | <ul style="list-style-type: none">▪ Pain relief▪ Promotes skin regeneration▪ Promote surgical wound closure | Partial range adjustable (780~1100nm) | Not adjustable |

Skin Disease



Moisturizing & care



Regeneration



- Wavelength : 485nm
- Effect is maximized when used with existing ointments
- Used for sterilization , cooling, atopy, pain relief, promoting metabolism, heat stimulation

- Wavelength : 400~800nm
- Blue/green light strengthens antibacterial and anti-inflammatory activity that treats pimples
- Red light sources helps to prevent aging and skin tone up / elasticity

- Wavelength : 400~1100nm
- Removes collagen fibers in aged skin and stimulates the synthesis creating new collagen fibers.

시험 결과

부산대학교 산학협력단
LED-해양 융합기술 연구센터
LED-Marine Convergence Technology R&D Center
주소: 부산시 남구 천전로 365 (용당동, 부산대학교 내)
전화: 051-629-7778 팩스: 051-629-7780

1. 시험방법
의뢰자 제공 광원 (UV LED 램판)

- 측정 방법

1. 의뢰자 제공 광원으로 시료의 중심부 표면에 직접 조사 함.
2. 조사 시간은 15분 이상할 것.
3. 조사 후 광원을 끄고 뒤 시료 표면을 마태와 같은 측정 조건으로 휘도 측정 함.
4. 시료 표면에 광원을 재조사 상태에서 휘도를 측정 함.

- 측정 조건

휘도측정기와 시편 거리(φ)는 36 cm 임.
View Angle : 3°

2. 사용장비

| 시험항목 | 사용장비 | 관리번호 |
|-----------|------|-----------|
| 휘도 및 스펙트럼 | 휘도계 | LMCC-A-28 |

LMCC-TF-18-06090

G4B(www.g4b.go.kr)진위확인코드 : aicILQe2KKw=

시험 결과

부산대학교 산학협력단
LED-해양 융합기술 연구센터
LED-Marine Convergence Technology R&D Center
주소: 부산시 남구 천전로 365 (용당동, 부산대학교 내)
전화: 051-629-7778 팩스: 051-629-7780

2. 시험결과

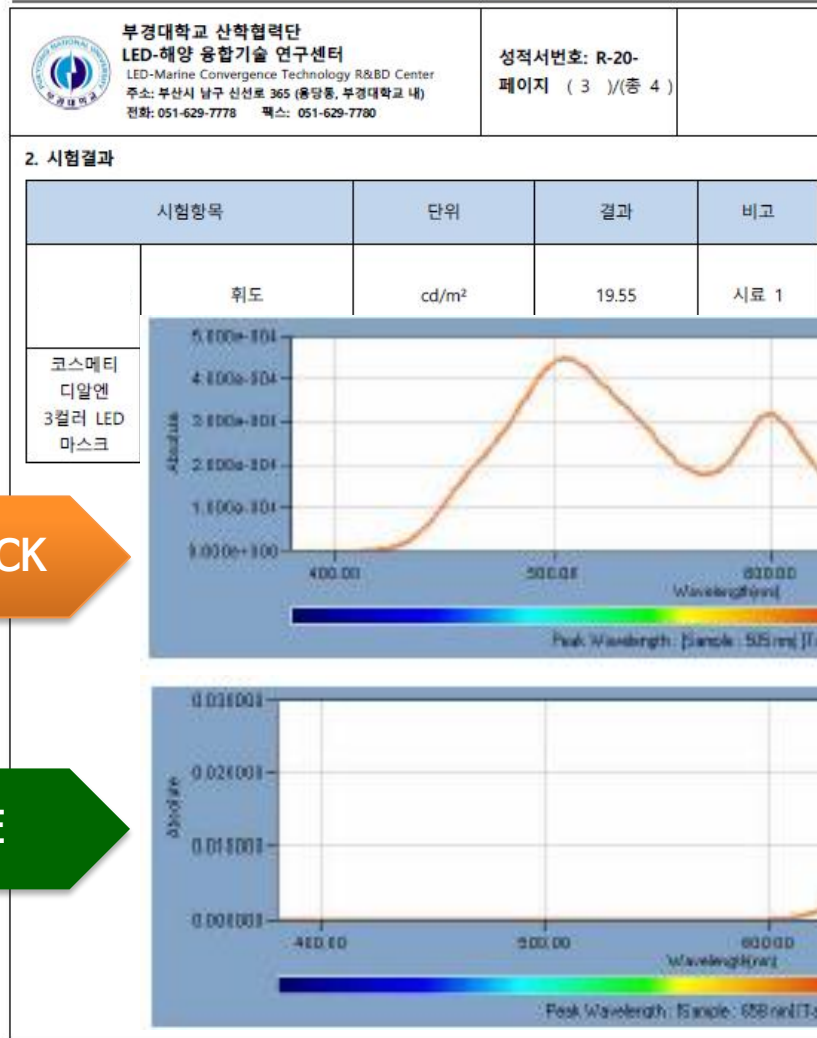
| | 시험항목 | 단위 | 결과 | 비고 |
|--|------|-------------------|-------|----|
| | 휘도 | cd/m ² | 59.30 | |
| | 스펙트럼 | | | |
| | 휘도 | cd/m ² | 11.18 | |
| | 스펙트럼 | | | |

LMCC-TF-18-06090

G4B(www.g4b.go.kr)진위확인코드 : aicILQe2KKw=

Clinical data (LED DEVICE vs LED MASK PACK)

시험결과



① 마스크팩은 연속적 파장대
파장 영역대가 넓게 분포됨

② 마스크기기는 순간적인
파장대

LED MASK PACK

LED DEVICE

시험 성적서

접수번호: 82191803102624-002

발급번호: 0000167163

접수일자 : 2019년 08월 20일

발 문 일 지 : 2019년 08월 29일

| | | | |
|-------|---|----------|----------|
| 사업명 | | 결사총회 | 연구/참고/기타 |
| 제출번호 | - | 제출/수입/입차 | - |
| 영향/유형 | - | 유형기타 | - |
| 업제명 | | 대.물자 | --- |
| 소재지 | | 전라북도 | |

시험 항목 및 결과

| 시행 항목 | 시행 기준 | 단위 | 결과 | R.L. | 비 고 |
|-------|-------|------|-----|------|------------------------------|
| 합동출역제 | 출발률 | =" | 출발률 | =" | 식당용 카루 및 출역 차량 운영 (합동출역제) |
| 날 | =" | 100% | 출발률 | 1 | 차량용 안전카출 종이 차량 규정 |
| 이름 | =" | 100% | 출발률 | 1 | 차량용 안전카출 종이 차량 규정 |
| 정리문 | =" | 100% | 출발률 | 1 | 차량용 안전카출 종이 차량 규정 |
| 카카를 | =" | 100% | 출발률 | 1 | 차량용 안전카출 종이 차량 규정 |
| 내일 | =" | 100% | 출발률 | 1 | 차량용 안전카출 종이 차량 규정 |
| 주변 | =" | 100% | 출발률 | 0.02 | 차량용 안전카출 종이 차량 규정 |

+ 国、人 : Reporting Line

시행결과서자 : 송하열, 문지상, 이원지, 최문아

기술책임자 : 김해성

※ 목·팔꿈치·외측손가락·발바닥·발목관절을 대상으로 한 검진입니다.
※ 지면이 두꺼운 관절부 시험·검사 항목 및 검사항목별 시험·검사 기구입니다.
※ 검사결과를 평가하거나 합격·불합격 등에 표시할 때에는 시험·검사서질서 권표 노란색 항목 표시하여야 합니다.

본 시집에서는 「심곡의학봉이 시집」과 더불어 「관판필록」에 따른 업무와 관현이 없으며, 이로 인한 필경 투철시
심곡의학봉을한정한다. 이것이 바로 필록을 한정한 것이다.

(사)KOTITI시협연구원



경기도 성남시 중원구 새마을로 99(삼대현동)

(T) +82-2-3481-7142 (F) +82-2-3481-7179 (W) www.kpsri-global.com

CPCNF-23-02

(PAGE 1 OF 2)

TEST REPORT

KOTITI No : 82191503102624-002

Issue No : 2871217778

Receipt Date : 20 / 08 / 2019

Issue Date : 29 / 08 / 2019

| | | | |
|---------------|---|-------------|-------------------------|
| Sample Name | | Test Object | Research/Reference/Etc. |
| Lot No | - | MDF/MFG | - |
| Weight/Volume | - | Expiry Date | - |
| Company | | President | |
| Address | | Telephone | |

Test Items & Test Results

| Test Items | Specifications | Unit | Results | R.L. | Remarks |
|--------------------------------|----------------|------|---------|------|--|
| Fluorescence brightening agent | N.D. | - | N.D. | - | Standard codes of containers and packaging materials for food (Fluorescence brightening agent) |
| Lead | - | ppb | N.D. | 1 | Regulation on the Safety Standard, etc. of Cosmetics (MFDS) |
| Arsenic | - | ppb | N.D. | 1 | Regulation on the Safety Standard, etc. of Cosmetics (MFDS) |
| Antimony | - | ppb | N.D. | 1 | Regulation on the Safety Standard, etc. of Cosmetics (MFDS) |
| Cadmium | - | ppb | N.D. | 1 | Regulation on the Safety Standard, etc. of Cosmetics (MFDS) |
| Nickel | - | ppb | N.D. | 1 | Regulation on the Safety Standard, etc. of Cosmetics (MFDS) |
| Mercury | - | ppb | N.D. | 0.02 | Regulation on the Safety Standard, etc. of Cosmetics (MFDS) |

* N.D. : Not Detected

^a R.L. : Reporting Limit

Researcher : Ha Young Son, Ji Sang Yoon, Min Ji Lee, Yun A Choi **Technical Manager :** Hae Sung Kim

☒ The test results above shall be only subject to the requested test items.
☒ In the case of insufficient space on the page, test items and test results may be written in the appendix.
☒ When advertising test results or indicating test results on containers or packages, the entire content of the test report shall be indicated.

This report produced in relation to the services will not be related with MFOS. And MFOS is not legally liable

KOTITI Testing & Research Institute



111, Sagimakgo-ro, Jungwon-gu, Seongnam-si, Gyeonggi-do, Korea

(T) +82-2-3461-7142 (F) +82-2-3461-7179 (W) www.kotm-global.com

CPCNP-23-02

(PAGE 1 OF 2)

Mass MEDIA Promotion

씨엠컴퍼니, 소비자가 뽑은 서비스고객만족대상 수상

머니투데이 중기포럼업팀 해남이 기자 | 입력 : 2020.07.15 21:22

씨엠컴퍼니(대표 최미영)가 7월 15일 프레스센터에서 열린 머니투데이 '2020 소비자가 뽑은 서비스고객만족대상' 시상식에서 뷰티(화장품) 부문 대상을 수상했다.



15일 오후 서울 중구 프레스센터에서 열린 2020년 제8회 소비자가 뽑은 서비스고객만족대상 시상식 씨엠컴퍼니 최미영 대표가 수상했다. / 사진=출판진기자 hoojjga

씨엠컴퍼니는 2019년 기업부설연구소 설립과 동시에 1년간 기획과 연구를 거쳐 개발한 신개념 'RED LED 마스크팩'을 출시했다.

RED LED 마스크팩은 별도의 뷰티 디바이스 없이 언제 어디서나 일반 마스크팩처럼 간단하게 사용할 수 있으며, 일상 생활 속에서 빛을 모아 스스로 발광하며 피부에 파장의 빛(RED)을 공급하는 신개념 마스크팩으로 각종 외부검증기관을 통해 안전성과 유효성을 검증받았다.

RED LED 마스크팩은 기존의 LED마스크와 동일하게 RED 빛 파장 효과가 세포를 자극시켜 마스크팩 방식처럼 RED LED 마스크팩을 얼굴에 직접 붙여 빛 에너지를 직접 피부 깊숙이 흡수시킨다.

LED 빛의 파장 중 RED(피부재생) 가시광 제품으로, 전성분 EWG 1등급 원료 및 특허받은 발광시트지 제작기술을 활용해 기존의 고가 LED 마스크 기기를 통해서만 가능했던 빛을 이용한 칙칙한 피부톤 개선, 피부탄력, 모공수축, 피부진정, 피부재생에 도움이 되는 제품이다.

또한, 마스크시트지는 비건 및 생분해 인증을 받은 친환경 시트로, 기능성 인증 에센스 함유량이 풍부해 피부에 유효성분을 전달하는 리프팅과 브라이팅 2가지 제품을 출시했다.

씨엠컴퍼니 관계자는 "출시 이전부터 해외 유명 뷰티샵 및 글로벌 브랜드사로부터 리브콜을 받아 미국, 대만, 중국, 일본시장 진출을 앞두고 있다"며 "특정 빛 파장을 이용한 신개념의 RED LED 마스크팩이다"고 전했다.

박상인 | 승인 2020.07.16 17:27 | 최종수정 2020.07.16 17:03 | 댓글 0

This article is translated by AI company Flitto and Infostock Daily using neural machine translation technology.



Choi Mi-young, CEO of CMcompany, won the 2020 5th Consumer Satisfaction Awards held at the Press Center in Jung-gu, Seoul on the afternoon of the 15th.

[Infostock Daily= Reporter Park Sang-In] CMcompany(CEO Choi Mi-young) won the grand prize in the beauty(cosmetics) category at the Money Today's '2020 Consumer-picked Service Customer Satisfaction Awards' held at the Press Center on July 15.

CMcompany launched a new concept of 'RED LED Mask Pack', which was developed after a year of planning and research, at the same time as the establishment of a corporate subsidiary research institute in 2019.

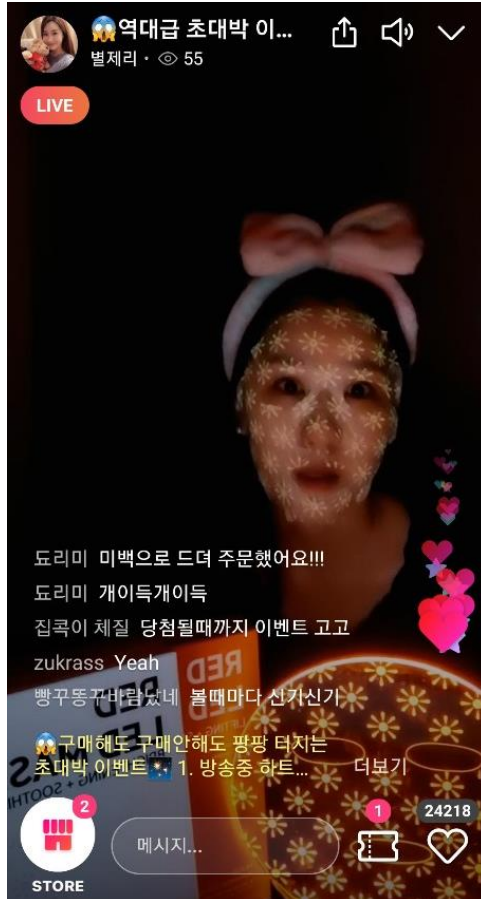
The RED LED mask pack is a new concept mask pack that collects light in daily life, glows on its own, and supplies the skin with the light of wavelength(RED), which can be used simply like a regular mask pack anytime and anywhere without a separate beauty device, and has been verified for safety and validity through various external verification agencies.

The RED LED mask pack is identical with the existing LED mask, and the RED light wavelength effect stimulates the cell and directly attaches the RED LED mask pack to the face like the mask pack method and the light energy is absorbed directly deep into the skin.

It is an RED(skin regeneration) visible light product among LED light wavelengths, and it is a product that utilizes EWG's first-grade raw material and patented luminous sheet fabrication technology to improve dull skin tone, skin elasticity, pore shrinkage, skin calming and skin regeneration using light that was only possible through expensive LED mask devices.

In addition, mask sheet is an eco-friendly sheet certified for vegan and biodegradation, and it has released two products, lifting and brightening, which deliver effective ingredients to the skin due to their abundant functional authentication essence content.

Reporter Park Sang-In si2020@infostock.co.kr



<https://grip.show/content/jowprwx9>



<https://grip.show/content/jowprwx9>

Thank you

<http://www.reju21.com>

<http://www.Bonhenna.com>

